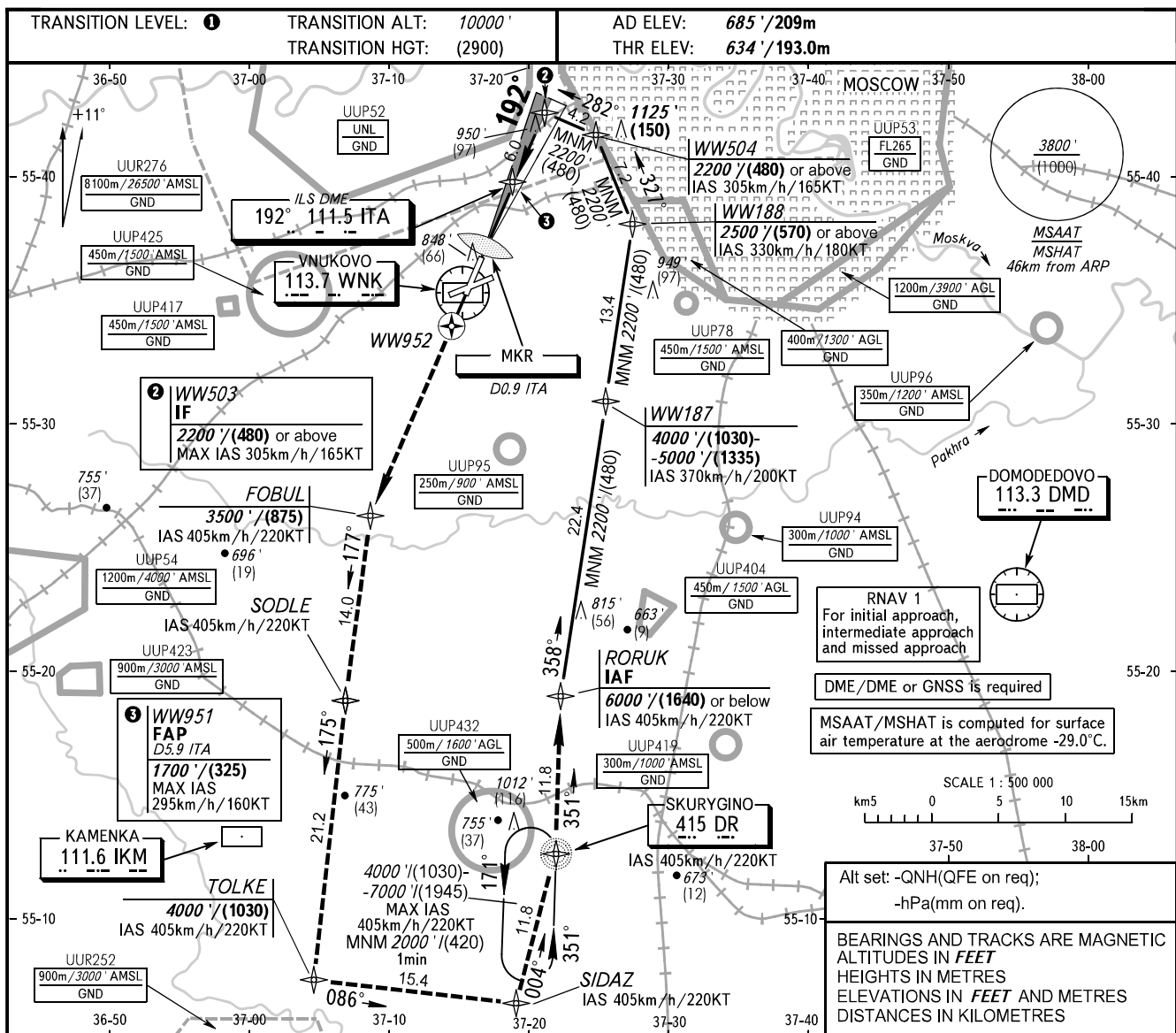


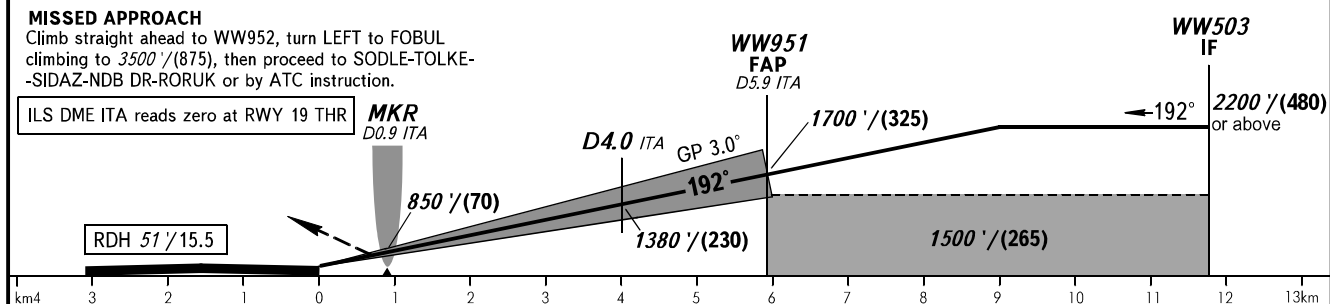
MOSCOW, RUSSIA
VNUKOVO
ILS CAT I RWY 19

VNUKOVO TOWER	118.300		
VNUKOVO RADAR	123.400	126.000	135.900



Climb straight ahead to WW952, turn LEFT to FOBUL climbing to 3500' (875), then proceed to SODLE-TOLKE-SIDAZ-NDB DR-RORUK or by ATC instruction.

ILS DMF ITA reads zero at RWY 19 THR



OCA(H)		A	B	C			D		① TRANSITION LEVEL:					
Straight-in Approach	CAT I	834' (200')/(60)	834' (200')/(60)	834' (200')/(60)			834' (200')/(60)		- FL110 when QNH is 1013 hPa (760mm mercury column) or above; - FL120 when QNH is 977 hPa (733mm mercury column) or above, but less than 1013 hPa (760mm mercury column); - FL130 when QNH is less than 977 hPa (733mm mercury column).					
GROUND SPEED			km/h	150	180	210	240	270	300	330	360	390	420	450
RATE OF DESCENT			m/s	2.2	2.6	3.0	3.5	3.9	4.3	4.8	5.2	5.6	6.1	6.5
			ft / min	427	512	597	682	768	853	938	1024	1109	1194	1280

CHANGE: ILS CAT, UUP, UUR